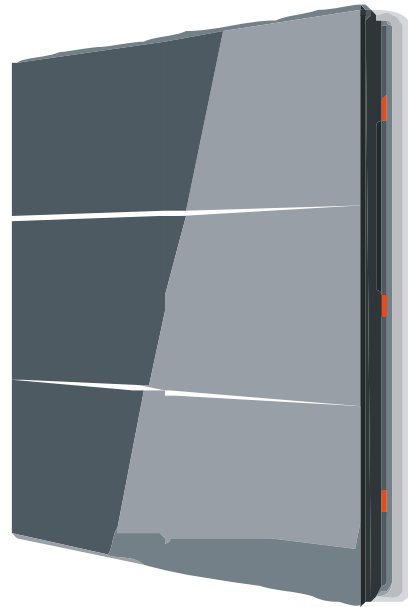

Unirro-KNX

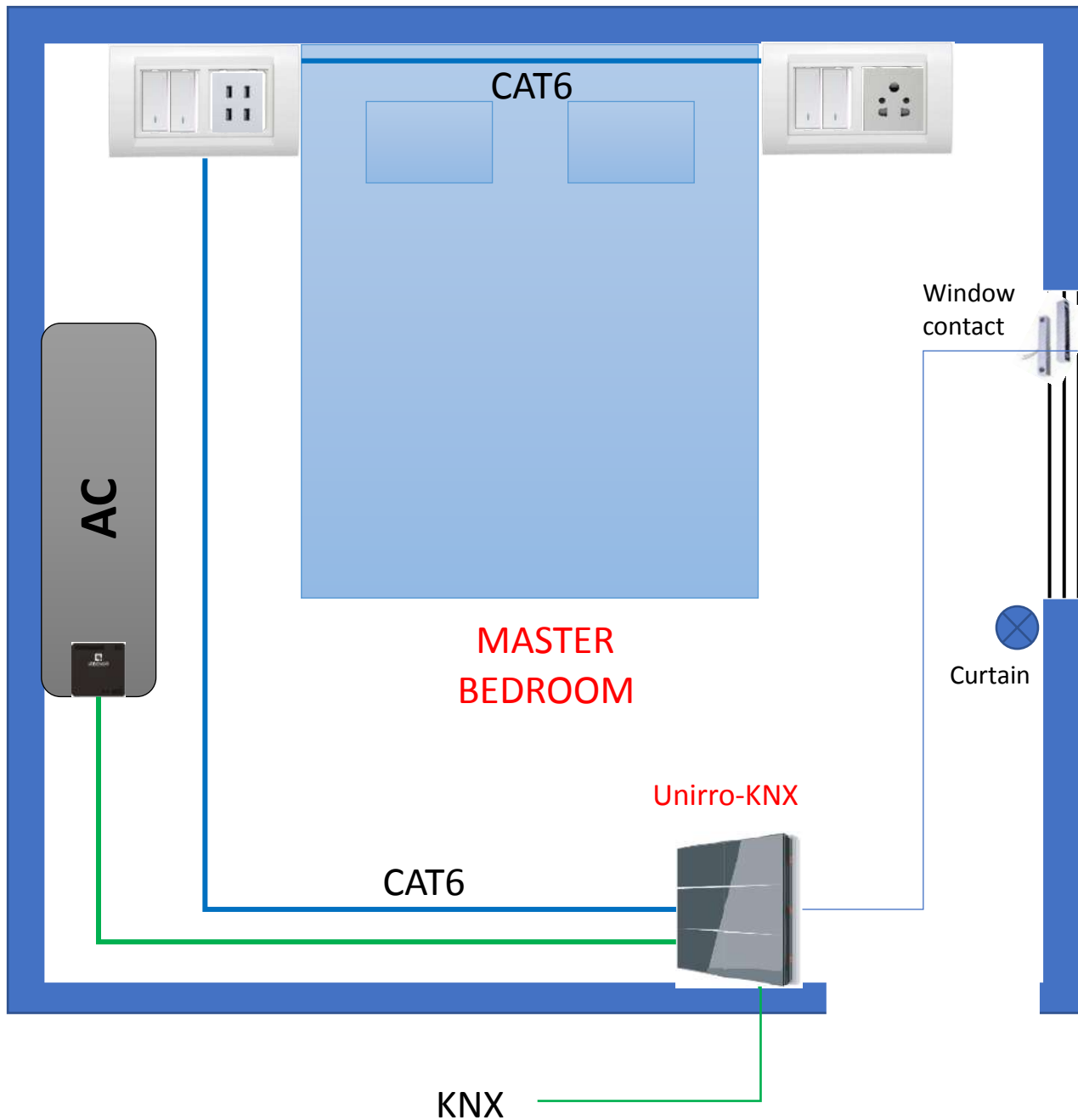
Digital Input Application



©, 2019, Lebenor, all rights reserved.

Digital Input Solution (Ex: Master Bedroom):

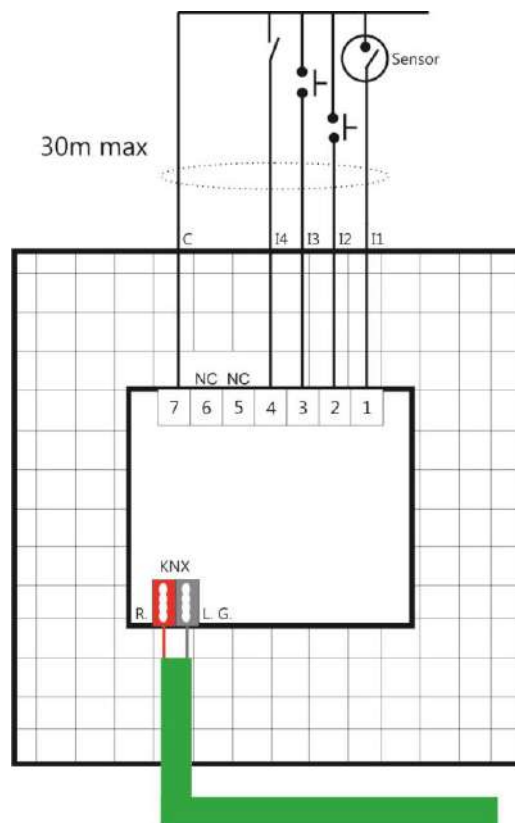
Unirro-knx is having 4 digital inputs; we can connect the Sensor, push button and switch to those inputs to & configure to trigger the knx commands like switching & scene.



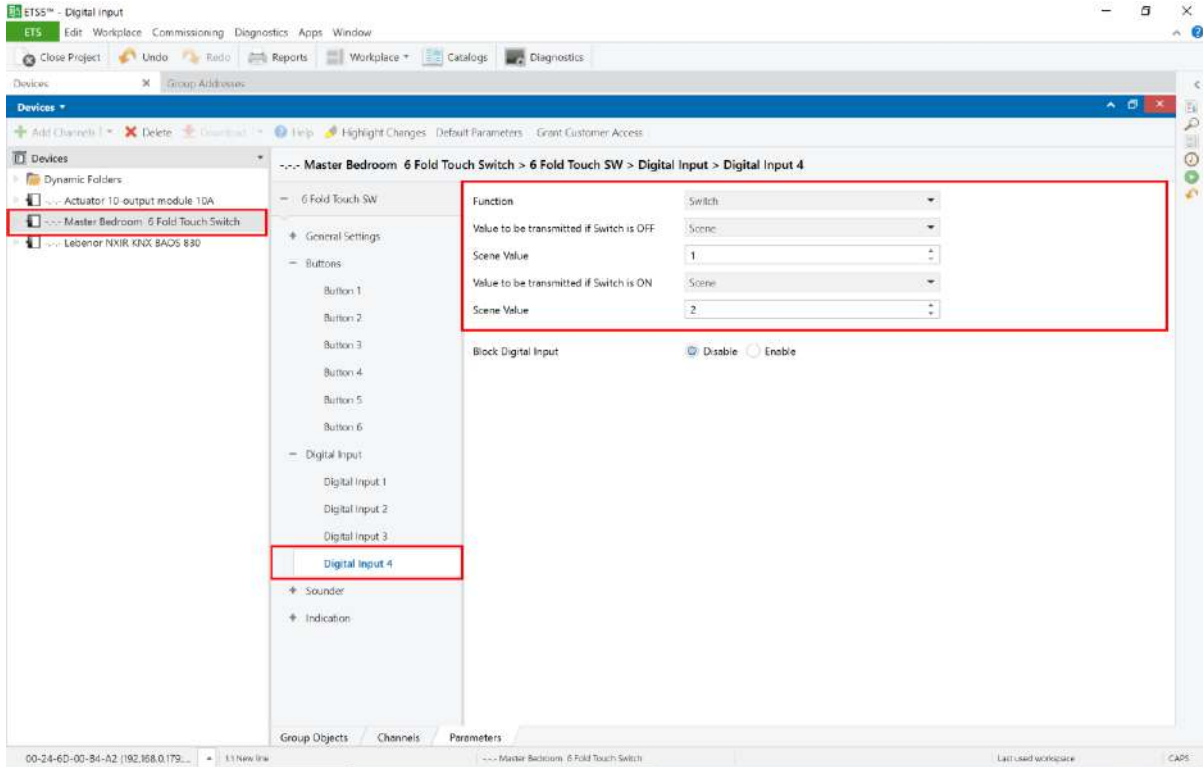
Application Diagram: fig-1

Steps for Configuration of Digital Inputs:

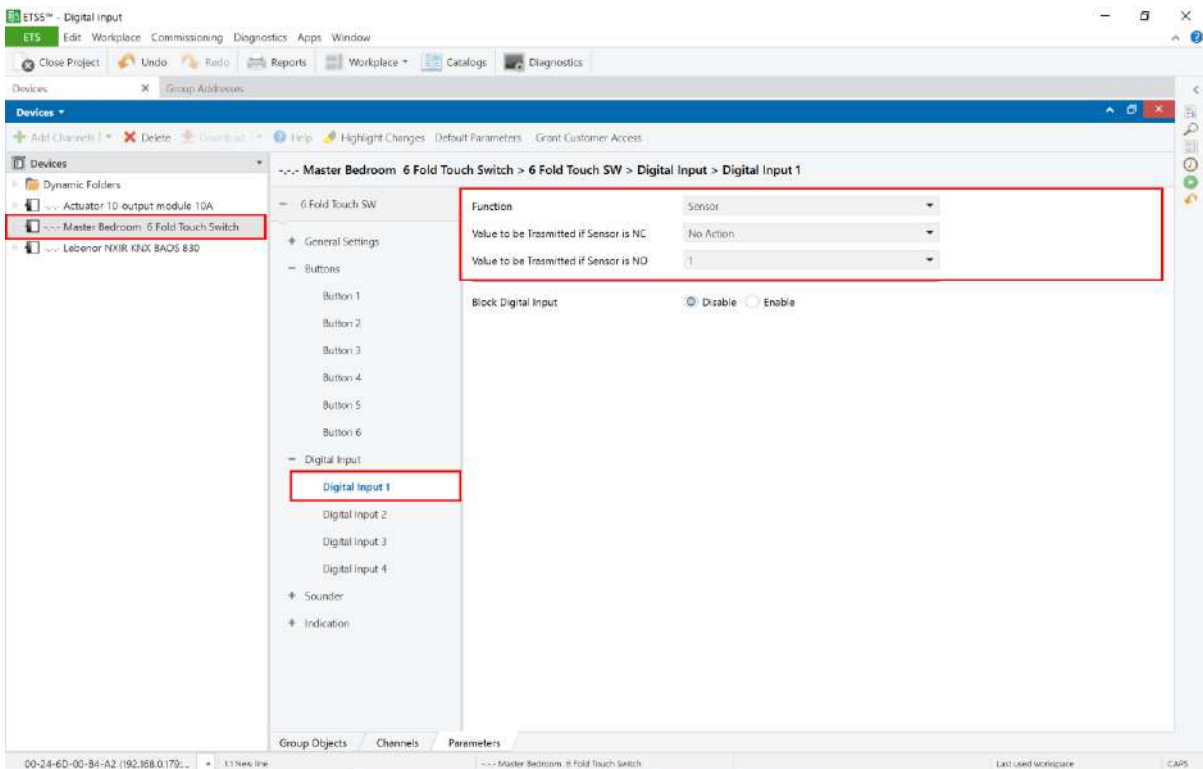
- As shown in the fig-1 connect the switch button & Sensor to the digital input of the nearest Unirro-knx keypad. Typical connections diagrams are shown in fig-2.
- Configure the particular digital input-1 as sensor, & set the transmitted value "1" refer fig-3, configure digital input 2 & 3 as switch & set the transmitted value "1" for NC & "0" for NO. And last 4th digital input configure as scene & set the transmitted value "Scene-1" for NO & "Scene-2" for NC. (Refer fig-3,4 & 5)
- Link the input commands to their correspondent Group addresses as shown in fig-
- 4th input is used to control the curtain through scene object. (Refer fig-7)
- 1st input (Window sensor) is linked with the "AC OFF" object to co-ordinate AC operation with the window. AC should be switched off while window is open.
- Digital input 2 & 3 are configured for normal switching operation.



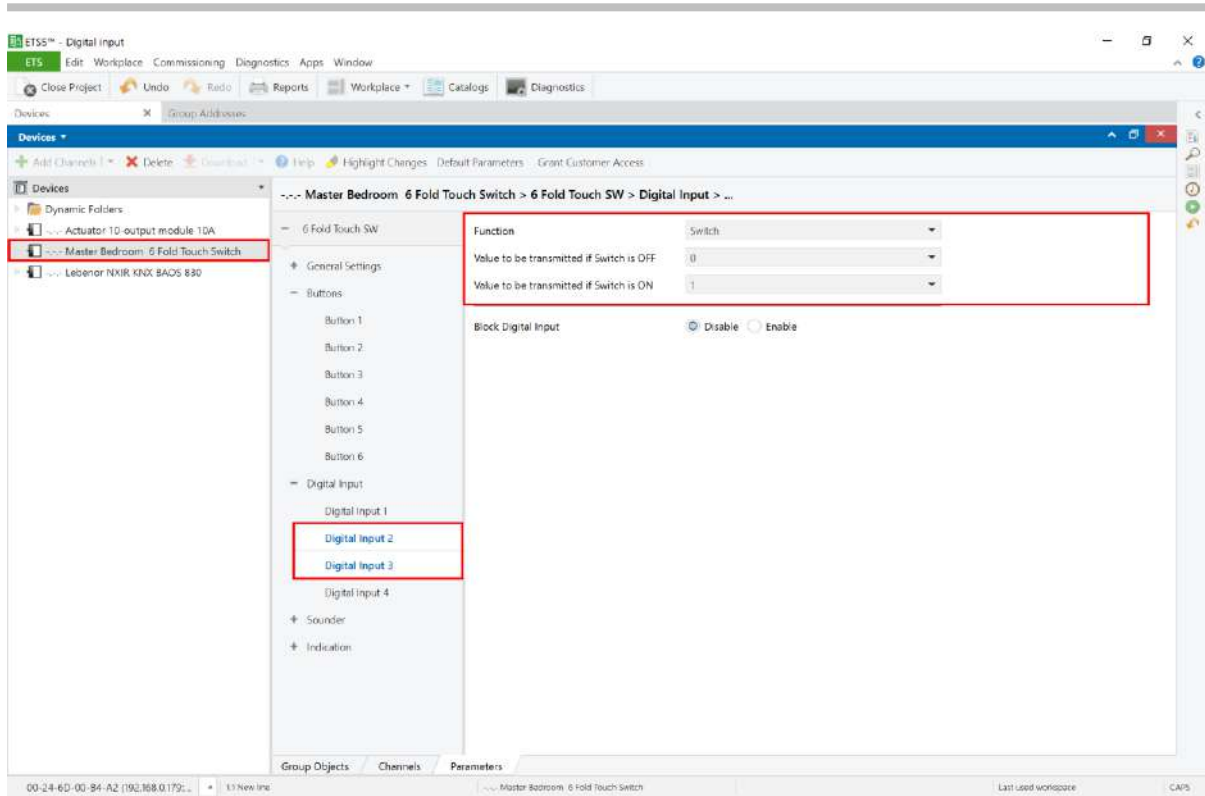
Typical Connection Diagram: fig-2



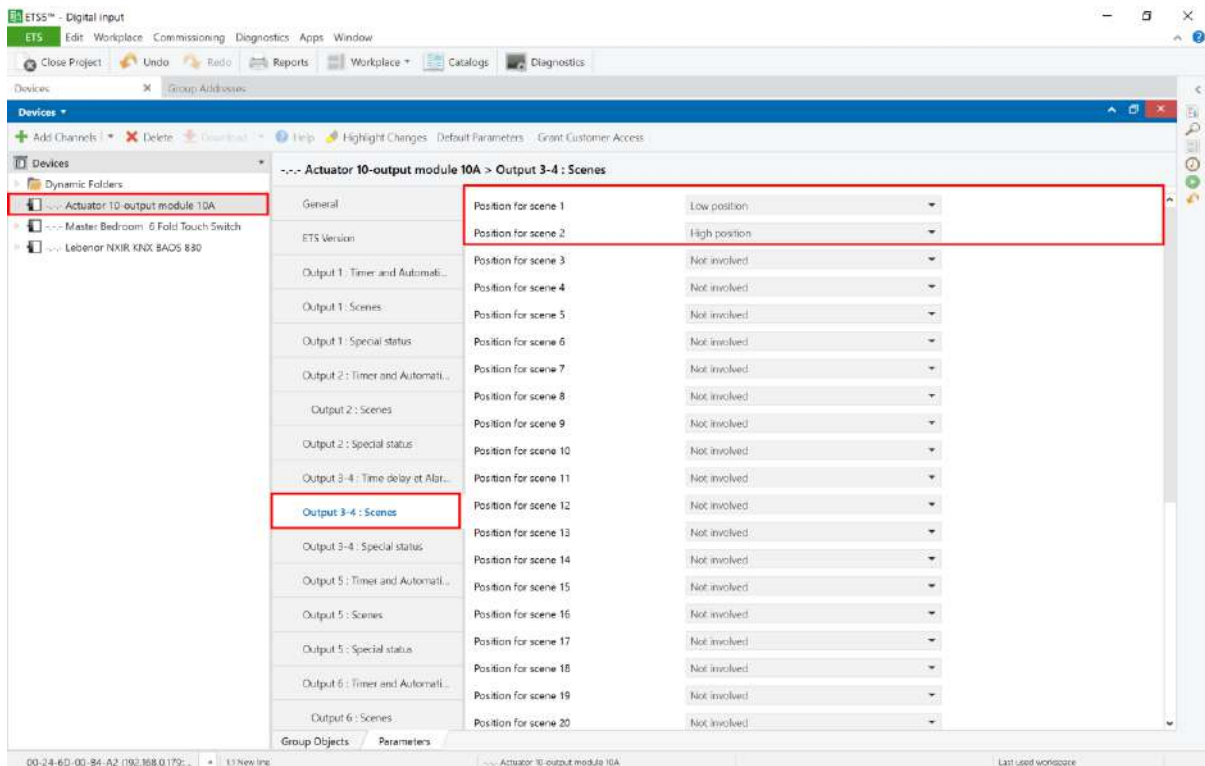
Digital input sensor: fig-3



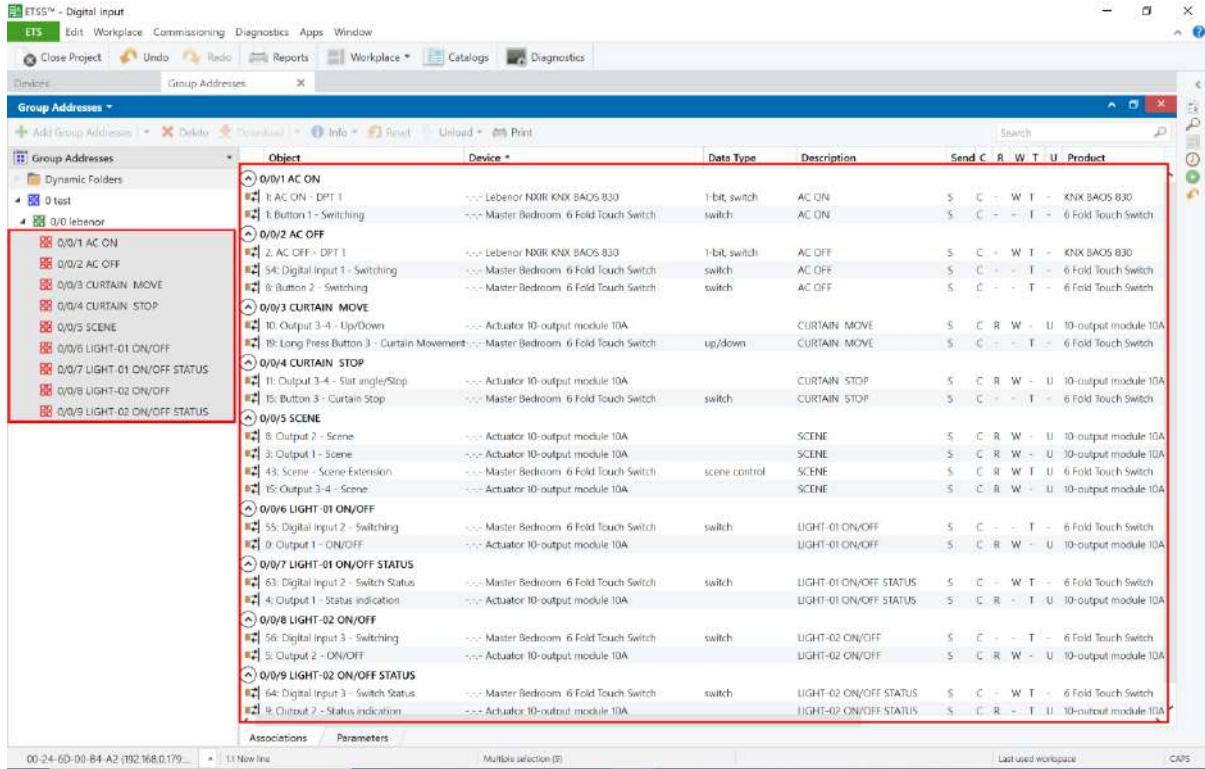
Digital Input Sensor: fig-4



Digital Input switching : fig-5



Curtain Scene: fig-6



Object	Device	Data Type	Description	Send	C	R	W	T	U	Product
0/0/1 AC ON	1: AC ON - DPT 1	1-bit, switch	AC ON	S	-	-	-	-	-	KNX BAOS 830
0/0/1 AC ON	1: Button 1 - Switching	switch	AC ON	S	-	-	-	-	-	6 Fold Touch Switch
0/0/2 AC OFF	2: AC OFF - DPT 1	1-bit, switch	AC OFF	S	-	-	-	-	-	KNX BAOS 830
0/0/2 AC OFF	54: Digital Input 1 - Switching	switch	AC OFF	S	-	-	-	-	-	6 Fold Touch Switch
0/0/2 AC OFF	8: Button 2 - Switching	switch	AC OFF	S	-	-	-	-	-	6 Fold Touch Switch
0/0/3 CURTAIN MOVE	10: Output 3-4 - Up/Down	up/down	CURTAIN MOVE	S	C	R	W	-	U	10-output module 10A
0/0/3 CURTAIN MOVE	19: Long Press Button 3 - Curtain Movement	up/down	CURTAIN MOVE	S	-	-	-	-	-	6 Fold Touch Switch
0/0/4 CURTAIN STOP	11: Output 3-4 - Slat angle/Stop	switch	CURTAIN STOP	S	C	R	W	-	U	10-output module 10A
0/0/4 CURTAIN STOP	15: Button 3 - Curtain Stop	switch	CURTAIN STOP	S	-	-	-	-	-	6 Fold Touch Switch
0/0/5 SCENE	8: Output 2 - Scene	scene control	SCENE	S	C	R	W	-	U	10-output module 10A
0/0/5 SCENE	3: Output 1 - Scene	scene control	SCENE	S	C	R	W	-	U	10-output module 10A
0/0/5 SCENE	43: Scene - Scene Extension	scene control	SCENE	S	C	R	W	-	U	6 Fold Touch Switch
0/0/5 SCENE	15: Output 3-4 - Scene	scene control	SCENE	S	C	R	W	-	U	10-output module 10A
0/0/6 LIGHT-01 ON/OFF	55: Digital Input 2 - Switching	switch	LIGHT-01 ON/OFF	S	-	-	-	-	-	6 Fold Touch Switch
0/0/6 LIGHT-01 ON/OFF	9: Output 1 - ON/OFF	switch	LIGHT-01 ON/OFF	S	C	R	W	-	U	10-output module 10A
0/0/7 LIGHT-01 ON/OFF STATUS	63: Digital Input 2 - Switch Status	switch	LIGHT-01 ON/OFF STATUS	S	-	-	-	-	-	6 Fold Touch Switch
0/0/7 LIGHT-01 ON/OFF STATUS	4: Output 1 - Status indication	switch	LIGHT-01 ON/OFF STATUS	S	C	R	-	-	U	10-output module 10A
0/0/8 LIGHT-02 ON/OFF	56: Digital Input 3 - Switching	switch	LIGHT-02 ON/OFF	S	-	-	-	-	-	6 Fold Touch Switch
0/0/8 LIGHT-02 ON/OFF	5: Output 2 - ON/OFF	switch	LIGHT-02 ON/OFF	S	C	R	W	-	U	10-output module 10A
0/0/9 LIGHT-02 ON/OFF STATUS	64: Digital Input 3 - Switch Status	switch	LIGHT-02 ON/OFF STATUS	S	-	-	-	-	-	6 Fold Touch Switch
0/0/9 LIGHT-02 ON/OFF STATUS	9: Output 2 - Status indication	switch	LIGHT-02 ON/OFF STATUS	S	C	R	-	-	U	10-output module 10A

Linking: fig-7

Thank You

For any further technical support call us on +91 9607002474 or write us on support@lebenor.com